

GBG Loqate Release Notes

2016Q4.2

GBG Loqate, 999 Baker Way, Suite 320, San Mateo, California 94404

T +1 (650) 273-5603 | F +1 (650) 273-4364  @loqate | E webinfo@loqate.com | <http://www.loqate.com>

Registered office as above. Registered in England and Wales number 2415211. VAT number 539 7162 18.



Table of Contents

- Case Resolutions 3**
- Verify Engine Updates 3**
 - Improved Premise and Sub-Building Component Matching 3
- Auto-Complete Updates..... 4**
 - General Quality and Performance Improvements 4
 - Country Support 4
- Global Knowledge Repository (GKR) Updates..... 5**
- Installation Instructions 13**
 - Standard GBG Loqate Installation (Multi-threaded) 13
 - Single-threaded GBG Loqate Installation 14
 - FTP Server Contents..... 14
- Need Help? 15**

GBG Loqate, 999 Baker Way, Suite 320, San Mateo, California 94404

T +1 (650) 273-5603 | F +1 (650) 273-4364  @loqate | E webinfo@loqate.com | <http://www.loqate.com>

Registered office as above. Registered in England and Wales number 2415211. VAT number 539 7162 18.



Case Resolutions

Please visit http://www.loqate.com/support/releasenotes/2016Q4_2cases for a list of cases resolved in this release.

If you would like more details on any of the solved cases listed, please contact support@loqate.com for further information.

Verify Engine Updates

Improved Premise and Sub-Building Component Matching

Before this patch, when Premise Number or Sub-Building Number partially matched the reference data, the partially matching component from the input would return. The Verify Engine will try exact matching first and if that fails, the engine will default to partial matching.

2016Q4.1

Field	Value	Status
Address Quality Index	A	Result 1
Address Verification Code	V55-I55-P6-100	
Organization	Empty	Empty
Sub-Building	A	Verified no change
Premise	1	Verified no change
Building	Supreme & District Court House	Verified no change
PostBox	Empty	Empty
DependentThoroughfare	Empty	Empty
Thoroughfare	Sir Winston Churchill Sq NW	Verified no change
DoubleDependentLocality	Empty	Empty
DependentLocality	Empty	Empty
Locality	Edmonton	Verified no change
Sub-AdministrativeArea	Empty	Empty
AdministrativeArea	AB	Verified no change
SuperAdministrativeArea	Empty	Empty
PostalCode	TSJ 0R2	Verified no change
Country	Canada	Verified no change
ISO2	CA	ISO3 CAN
Unmatched		
Processed Time	00:00:00.05	

2016Q4.1 - Note that Premise and Sub-Building output are not as expected

2016Q4.2

Field	Value	Status
Address Quality Index	A	Result 1
Address Verification Code	V54-I55-P6-100	
Organization	Empty	Empty
Sub-Building	A	Added
Premise	1A	Verified no change
Building	Supreme & District Court House	Verified no change
PostBox	Empty	Empty
DependentThoroughfare	Empty	Empty
Thoroughfare	Sir Winston Churchill Sq NW	Verified no change
DoubleDependentLocality	Empty	Empty
DependentLocality	Empty	Empty
Locality	Edmonton	Verified no change
Sub-AdministrativeArea	Empty	Empty
AdministrativeArea	AB	Verified no change
SuperAdministrativeArea	Empty	Empty
PostalCode	TSJ 0R2	Verified no change
Country	Canada	Verified no change
ISO2	CA	ISO3 CAN
Unmatched		
Processed Time	00:00:00.66	

2016Q4.2 - Premise is now correct and Sub-Building has been added.

GBG Loqate, 999 Baker Way, Suite 320, San Mateo, California 94404

T +1 (650) 273-5603 | F +1 (650) 273-4364 | [@loqate](https://www.loqate.com) | [E webinfo@loqate.com](mailto:webinfo@loqate.com) | <http://www.loqate.com>

Registered office as above. Registered in England and Wales number 2415211. VAT number 539 7162 18.



Auto-Complete Updates

General Quality and Performance Improvements

Loqate has made numerous improvements in Auto-Complete around quality and performance.

- Handling Sub-Building input component
- Handling hyphens and slashes
- Handling alphanumeric
- Limit the results of Sub-Building auto-expansion

Country Support

The table below shows the countries which are currently supported in Auto-Complete.

Country Name	ISO Code
Australia	AU
Canada	CA
United Kingdom	UK
United States	US

GBG Loqate, 999 Baker Way, Suite 320, San Mateo, California 94404

T +1 (650) 273-5603 | F +1 (650) 273-4364 |  @loqate | E webinfo@loqate.com | <http://www.loqate.com>

Registered office as above. Registered in England and Wales number 2415211. VAT number 539 7162 18.



Global Knowledge Repository (GKR) Updates


The table below shows which countries have been updated, and how, in this release.

- Reference Data = 11 countries
- Lexicons = 11 countries
- Context Rules = 3 countries

For the complete table listing all countries, please visit <http://www.loqate.com/support/releasenotes/>.

Country Name	ISO Code	Context Rules	Lexicons	Reference Data
AFGHANISTAN	AF		X	
ÅLAND ISLANDS	AX			
ALBANIA	AL			
ALGERIA	DZ			
AMERICAN SAMOA	AS			X
ANDORRA	AD			
ANGOLA	AO			
ANGUILLA	AI			
ANTARCTICA	AQ			
ANTIGUA AND BARBUDA	AG			
ARGENTINA	AR		X	
ARMENIA	AM			
ARUBA	AW			
AUSTRALIA	AU		X	
AUSTRIA	AT	X		
AZERBAIJAN	AZ			
BAHAMAS	BS			
BAHRAIN	BH			
BANGLADESH	BD			
BARBADOS	BB			
BELARUS	BY			
BELGIUM	BE			
BELIZE	BZ			
BENIN	BJ			
BERMUDA	BM			
BHUTAN	BT			
BOLIVIA, PLURINATIONAL STATE OF	BO			
BONAIRE, SINT EUSTATIUS AND SABA	BQ			
BOSNIA AND HERZEGOVINA	BA			
BOTSWANA	BW			
BOUVET ISLAND	BV			

GBG Loqate, 999 Baker Way, Suite 320, San Mateo, California 94404


T +1 (650) 273-5603 | F +1 (650) 273-4364  @loqate | E webinfo@loqate.com | <http://www.loqate.com>

Registered office as above. Registered in England and Wales number 2415211. VAT number 539 7162 18.



Country Name	ISO Code	Context Rules	Lexicons	Reference Data
BRAZIL	BR			
BRITISH INDIAN OCEAN TERRITORY	IO			
BRUNEI DARUSSALAM	BN			
BULGARIA	BG			
BURKINA FASO	BF			
BURUNDI	BI			
CAMBODIA	KH			
CAMEROON	CM			
CANADA	CA		X	X
CAPE VERDE	CV			
CAYMAN ISLANDS	KY			
CENTRAL AFRICAN REPUBLIC	CF			
CHAD	TD			
CHILE	CL			
CHINA	CN			
CHRISTMAS ISLAND	CX			
COCOS (KEELING) ISLANDS	CC			
COLOMBIA	CO			
COMOROS	KM			
CONGO	CG			
CONGO, THE DEMOCRATIC REPUBLIC OF THE	CD			
COOK ISLANDS	CK			
COSTA RICA	CR			
CÔTE D'IVOIRE	CI			
CROATIA	HR			
CUBA	CU			
CURAÇAO	CW			
CYPRUS	CY			
CZECH REPUBLIC	CZ			
DENMARK	DK			
DJIBOUTI	DJ			
DOMINICA	DM			
DOMINICAN REPUBLIC	DO			
ECUADOR	EC			
EGYPT	EG			
EL SALVADOR	SV			

GBG Loqate, 999 Baker Way, Suite 320, San Mateo, California 94404


T +1 (650) 273-5603 | F +1 (650) 273-4364  @loqate | E webinfo@loqate.com | <http://www.loqate.com>

Registered office as above. Registered in England and Wales number 2415211. VAT number 539 7162 18.



Country Name	ISO Code	Context Rules	Lexicons	Reference Data
EQUATORIAL GUINEA	GQ			
ERITREA	ER			
ESTONIA	EE			
ETHIOPIA	ET			
FALKLAND ISLANDS (MALVINAS)	FK			
FAROE ISLANDS	FO			
FIJI	FJ			
FINLAND	FI			
FRANCE	FR			
FRENCH GUIANA	GF			
FRENCH POLYNESIA	PF			
FRENCH SOUTHERN TERRITORIES	TF			
GABON	GA			
GAMBIA	GM			
GEORGIA	GE			
GERMANY	DE			
GHANA	GH			
GIBRALTAR	GI			
GREECE	GR			
GREENLAND	GL			
GRENADA	GD			
GUADELOUPE	GP			
GUAM	GU			X
GUATEMALA	GT			
GUERNSEY	GG			
GUINEA	GN			
GUINEA-BISSAU	GW			
GUYANA	GY			
HAITI	HT			
HEARD ISLAND AND MCDONALD ISLANDS	HM			
HOLY SEE (VATICAN CITY STATE)	VA			
HONDURAS	HN			
HONG KONG	HK			
HUNGARY	HU			
ICELAND	IS			
INDIA	IN			

GBG Loqate, 999 Baker Way, Suite 320, San Mateo, California 94404


T +1 (650) 273-5603 | F +1 (650) 273-4364  @loqate | E webinfo@loqate.com | <http://www.loqate.com>

Registered office as above. Registered in England and Wales number 2415211. VAT number 539 7162 18.



Country Name	ISO Code	Context Rules	Lexicons	Reference Data
INDONESIA	ID			
IRAN, ISLAMIC REPUBLIC OF	IR			
IRAQ	IQ			
IRELAND	IE			
ISLE OF MAN	IM			
ISRAEL	IL			
ITALY	IT			
JAMAICA	JM			
JAPAN	JP			
JERSEY	JE			
JORDAN	JO			
KAZAKHSTAN	KZ			
KENYA	KE			
KIRIBATI	KI			
KOREA, DEMOCRATIC PEOPLE'S REPUBLIC OF	KP			
KOREA, REPUBLIC OF	KR		X	
KUWAIT	KW			
KYRGYZSTAN	KG			
LAO PEOPLE'S DEMOCRATIC REPUBLIC	LA			
LATVIA	LV			
LEBANON	LB			
LESOTHO	LS			
LIBERIA	LR			
LIBYA	LY			
LIECHTENSTEIN	LI			
LITHUANIA	LT			
LUXEMBOURG	LU			
MACAO	MO			
MACEDONIA, THE FORMER YUGOSLAV REPUBLIC OF	MK			
MADAGASCAR	MG			
MALAWI	MW			
MALAYSIA	MY		X	
MALDIVES	MV			
MALI	ML			
MALTA	MT			
MARSHALL ISLANDS	MH			X

GBG Loqate, 999 Baker Way, Suite 320, San Mateo, California 94404


T +1 (650) 273-5603 | F +1 (650) 273-4364  @loqate | E webinfo@loqate.com | <http://www.loqate.com>

Registered office as above. Registered in England and Wales number 2415211. VAT number 539 7162 18.



Country Name	ISO Code	Context Rules	Lexicons	Reference Data
MARTINIQUE	MQ			
MAURITANIA	MR			
MAURITIUS	MU			
MAYOTTE	YT			
MEXICO	MX			
MICRONESIA, FEDERATED STATES OF	FM			X
MOLDOVA, REPUBLIC OF	MD			
MONACO	MC			
MONGOLIA	MN			
MONTENEGRO	ME			
MONTSERRAT	MS			
MOROCCO	MA			
MOZAMBIQUE	MZ			
MYANMAR	MM			
NAMIBIA	NA			
NAURU	NR			
NEPAL	NP			
NETHERLANDS	NL			
NEW CALEDONIA	NC			
NEW ZEALAND	NZ		X	
NICARAGUA	NI			
NIGER	NE			
NIGERIA	NG			
NIUE	NU			
NORFOLK ISLAND	NF			
NORTHERN MARIANA ISLANDS	MP			X
NORWAY	NO			
OMAN	OM			
PAKISTAN	PK			
PALAU	PW			X
PALESTINE, STATE OF	PS			
PANAMA	PA			
PAPUA NEW GUINEA	PG			
PARAGUAY	PY			
PERU	PE			
PHILIPPINES	PH			

GBG Loqate, 999 Baker Way, Suite 320, San Mateo, California 94404

T +1 (650) 273-5603 | F +1 (650) 273-4364  @loqate | E webinfo@loqate.com | <http://www.loqate.com>

Registered office as above. Registered in England and Wales number 2415211. VAT number 539 7162 18.



Country Name	ISO Code	Context Rules	Lexicons	Reference Data
PITCAIRN	PN			
POLAND	PL			
PORTUGAL	PT			
PUERTO RICO	PR			X
QATAR	QA			
RÉUNION	RE			
ROMANIA	RO			
RUSSIAN FEDERATION	RU			
RWANDA	RW			
SAINT BARTHÉLEMY	BL			
SAINT HELENA, ASCENSION AND TRISTAN DA CUNHA	SH			
SAINT KITTS AND NEVIS	KN			
SAINT LUCIA	LC			
SAINT MARTIN (FRENCH PART)	MF			
SAINT PIERRE AND MIQUELON	PM			
SAINT VINCENT AND THE GRENADINES	VC			
SAMOA	WS			
SAN MARINO	SM			
SAO TOME AND PRINCIPE	ST			
SAUDI ARABIA	SA			
SENEGAL	SN			
SERBIA	RS	X	X	
SEYCHELLES	SC			
SIERRA LEONE	SL			
SINGAPORE	SG			
SINT MAARTEN	SX			
SLOVAKIA	SK			
SLOVENIA	SI			
SOLOMON ISLANDS	SB			
SOMALIA	SO			
SOUTH AFRICA	ZA			
SOUTH GEORGIA AND THE SOUTH SANDWICH ISLANDS	GS			
SOUTH SUDAN, REPUBLIC OF	SS			
SPAIN	ES		X	
SRI LANKA	LK			
SUDAN	SD			

GBG Loqate, 999 Baker Way, Suite 320, San Mateo, California 94404


T +1 (650) 273-5603 | F +1 (650) 273-4364  @loqate | E webinfo@loqate.com | <http://www.loqate.com>

Registered office as above. Registered in England and Wales number 2415211. VAT number 539 7162 18.



Country Name	ISO Code	Context Rules	Lexicons	Reference Data
SURINAME	SR			
SVALBARD AND JAN MAYEN	SJ			
SWAZILAND	SZ			
SWEDEN	SE			
SWITZERLAND	CH			
SYRIAN ARAB REPUBLIC	SY			
TAIWAN, PROVINCE OF CHINA	TW			
TAJIKISTAN	TJ			
TANZANIA, UNITED REPUBLIC OF	TZ			
THAILAND	TH			
TIMOR-LESTE	TL			
TOGO	TG			
TOKELAU	TK			
TONGA	TO			
TRINIDAD AND TOBAGO	TT			
TUNISIA	TN			
TURKEY	TR		X	
TURKMENISTAN	TM			
TURKS AND CAICOS ISLANDS	TC			
TUVALU	TV			
UGANDA	UG			
UKRAINE	UA			
UNITED ARAB EMIRATES	AE			
UNITED KINGDOM	GB			X
UNITED STATES	US	X	X	X
UNITED STATES MINOR OUTLYING ISLANDS	UM			
URUGUAY	UY			
UZBEKISTAN	UZ			
VANUATU	VU			
VENEZUELA, BOLIVARIAN REPUBLIC	VE			
VIET NAM	VN			
VIRGIN ISLANDS, BRITISH	VG			
VIRGIN ISLANDS, U.S.	VI			X
WALLIS AND FUTUNA	WF			
WESTERN SAHARA	EH			
YEMEN	YE			

GBG Loqate, 999 Baker Way, Suite 320, San Mateo, California 94404


T +1 (650) 273-5603 | F +1 (650) 273-4364  @loqate | E webinfo@loqate.com | <http://www.loqate.com>

Registered office as above. Registered in England and Wales number 2415211. VAT number 539 7162 18.



Country Name	ISO Code	Context Rules	Lexicons	Reference Data
ZAMBIA	ZM			
ZIMBABWE	ZW			

GBG Loqate, 999 Baker Way, Suite 320, San Mateo, California 94404

T +1 (650) 273-5603 | F +1 (650) 273-4364  @loqate | E webinfo@loqate.com | <http://www.loqate.com>

Registered office as above. Registered in England and Wales number 2415211. VAT number 539 7162 18.



Installation Instructions

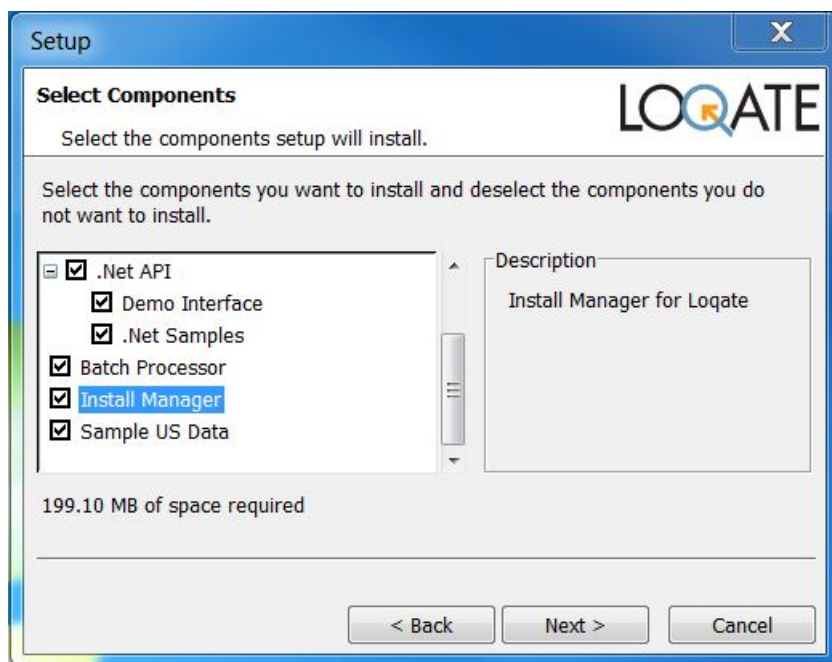
The 2016Q4.2 release makes improvements to the performance of the verification process and the quality of the results.

Please remember to update both the program files and the reference data. The improvements are tied to the data in the Global Knowledge Repository and the Local API. If you needs any assistance with the upgrade of the Local API or the data update process, please contact [GBG Loqate Support](#).

The setup wizard for the **Local API** can be obtained from our FTP server at:

- Site: ftp://ftp.loqate.com
- User: u58463092-build
- Password: lqt0414
- Directory: /2016Q4.2

GBG Loqate data packs can be downloaded and installed using the Install Manager. This is a component you will need to select during the installation of the Local API as shown below.



Standard GBG Loqate Installation (Multi-threaded)

1. Download the contents of the [2016Q4.2/AppInstaller](#) directory.
2. Check the MD5 checksums to ensure that the download has been successful.
3. Run the relevant Loqate Local API installer. Please note you may need to add execute privileges to the relevant installer when using Linux. Make sure the option "Install Manager" is selected for installation.
4. Execute the Install Manager script (InstallManager.bat on Windows and InstallManager.sh on other Linux/Unix platforms) and install the data. For further details, please review the 2016Q4.1 Installation Instructions document.
5. Run the relevant Global Knowledge Repository installer. Please note you may need to add execute privileges when using Linux.

GBG Loqate, 999 Baker Way, Suite 320, San Mateo, California 94404

T +1 (650) 273-5603 | F +1 (650) 273-4364 | [@loqate](#) | [E webinfo@loqate.com](#) | <http://www.loqate.com>

Registered office as above. Registered in England and Wales number 2415211. VAT number 539 7162 18.

Single-threaded GBG Loqate Installation

1. Download the contents of the [2016Q4.2/STAppInstaller](#) directory.
2. Check the MD5 checksums to ensure that the download has been successful.
3. Run the relevant Loqate Local API installer. Please note you may need to add execute privileges to the relevant installer when using Linux. Make sure the option "Install Manager" is selected for installation.
4. Execute the InstallManager script (InstallManager.bat on Windows and InstallManager.sh on other Linux/Unix platforms) and install the data. For further details, please review the 2016Q4.1 Installation Instructions document.
5. Run the relevant Global Knowledge Repository installer. Please note you may need to add execute privileges when using Linux.

FTP Server Contents

On the GBG Loqate FTP server, you will find the following items:

- **AppInstaller**: The folder which contains the Loqate Local API installer
- loqate_installer_aix: The AIX Loqate Local API installer
- loqate_installer_hpux: The HP-UX Loqate Local API installer
- loqate_installer_solaris_x86: The Solaris x86 Loqate Local API installer
- loqate_installer_sparc: The Solaris SPARC Loqate Local API installer
- loqate_installer_x86: The Linux 32-bit Loqate Local API installer
- loqate_installer_x86-cpp5: The Linux 32-bit C++ v5 Local API Loqate library installer
- loqate_installer_x86_64: The Linux 64-bit Loqate Local API installer
- setup.exe: The Windows 32-bit Loqate Local API installer
- setup_x64.exe: The Windows 64-bit Loqate Local API installer
- AppInstaller-md5.txt : Contains the checksums of the files in the folder
- **STAppInstaller**: The folder which contains the Loqate Local API installer for single-threaded libraries
- loqate_installer_aix: The AIX Loqate Local API installer
- loqate_installer_hpux: The HP-UX Loqate Local API installer
- loqate_installer_solaris_x86: The Solaris x86 Loqate Local API installer
- loqate_installer_sparc: The Solaris SPARC Loqate Local API installer
- loqate_installer_x86: The Linux 32-bit Loqate Local API installer
- loqate_installer_x86-cpp5: The Linux 32-bit C++ v5 Local API Loqate library installer
- loqate_installer_x86_64: The Linux 64-bit Loqate Local API installer
- AppInstaller-md5.txt : Contains the checksums of the files in the folder
- STAppInstaller-md5.txt : Contains the checksums of the files in the folder
- **OSGi**: The folder which contains the OSGi bundle for the Loqate Local API
- loqate-osgi-1.0.0.0.jar: The OSGi bundle for Loqate Local API installer
- osgi-md5.txt: Contains the checksums of the files in the folder
- **Rawfiles**: The folder which contains the Loqate Local API files in the following subfolders
- aix: The AIX Loqate Local API library files
- hp-ux: The HP-UX Loqate Local API library files
- solaris_x86: The Solaris x86 Loqate Local API library files
- sparc: The Solaris SPARC Loqate Local API library files
- linux32: The Linux 32-bit Loqate Local API library files
- linux32-cpp5: The Linux 32-bit C++ v5 Loqate Local API library files
- linux64: The Linux 64-bit Loqate Local API library files
- win64: The Windows 32-bit Loqate Local API library files
- win32: The Windows 64-bit Loqate Local API library files

GBG Loqate, 999 Baker Way, Suite 320, San Mateo, California 94404

T +1 (650) 273-5603 | F +1 (650) 273-4364 | [@loqate](#) | [E webinfo@loqate.com](#) | <http://www.loqate.com>

Registered office as above. Registered in England and Wales number 2415211. VAT number 539 7162 18.




Need Help?

Many answers to your questions may be found in our support pages. For full access to the technical information provided on our website, please make sure to register at:
<http://support.loqate.com/wp-login.php?action=register>

- **Support Home Page:** <http://support.loqate.com>
- **Local APIs:** <http://support.loqate.com/support/local-apis/>
- **Field Descriptions:** <http://support.loqate.com/support/fielddescrip/>
- **Server and Process Options:** <http://support.loqate.com/support/options/>
- **System Requirements:** <http://support.loqate.com/system-requirements/>

If you have any general questions, issues, or enhancement request you'd like to share with us, please fill out our case submission web form at <http://support.loqate.com/support/file-a-case/>.

GBG Loqate, 999 Baker Way, Suite 320, San Mateo, California 94404

T +1 (650) 273-5603 | F +1 (650) 273-4364  @loqate | E webinfo@loqate.com | <http://www.loqate.com>

Registered office as above. Registered in England and Wales number 2415211. VAT number 539 7162 18.



GBG | Loqate